

GF26xy 说明书

2024.07.02 版本:B3

△请务必按照本说明进行操作，并且选择本说明指定的工具，否则可能会造成技术指标无法满足标准要求，同时避免可能导致个人伤害、产品损害等潜在危害。

△为防止触电，在安装时请与系统断开。

△请勿在负载下插拔，警示标识刻模在连接器本体上。

△务必使用符合相关光伏标准的线缆。

△推荐使用脱醇型硅胶；如果使用脱肟型硅胶，在生产储存过程中，必须使硅胶中的 2-丁酮肟完全挥发出去，否则可能会导致塑料零部件开裂，金属件被腐蚀等不良现象。

△对于 UL 1500Vdc 的系统电压，双组份灌封胶材料应通过 1500V 或更高电压的 IPT 测试 60 分钟。

△灌封材料应满足 UL3730 对于带电部件和材料防水、浸没的要求（根据 UL746C f2 或 f1），覆盖导体部件的灌封胶厚度不小于 3mm

△组件装配过程中，不能碰到对连接器有腐蚀作用的异物。

△如果组件安装后连接器没有即刻对插，需要使用防尘帽

△产品若有技术改进、外观变化，以机身铭牌及实物为准，变化将列入新版资料中，恕不另行通知。

△未经人和公司事先书面许可的情况下，严禁以任何形式复制、传递、分发和存储本文档中的内容。

GF26xy Instruction

July 2nd 2024, Rev :B3

△Make sure to carefully read and understand the instruction before installation. If tools other than those specified by the instruction used or if the assembly instructions described here are disregarded then compliance with the standard requirements can't be guaranteed. Meanwhile avoid potential hazards which may result in personal injury and product damage.

△For protection against electric shock, while being assembled or disassembled, make sure connectors isolated from the power supply.

△Connectors may not be connected or disconnected under load, The warning mark is engraved on the connector body.

△The cables conformity with relevant photovoltaic standards must be used.

△We recommend you using dealcohol silicone. To use deoximation silicone will lead to metal parts corrosion and plastic parts crack if you do not fully volatilize 2-Butanone-oxime during production and storage.

△For system voltages of UL 1500Vdc, potting material with two-part liquid component should pass IPT 60 minutes at 1500V or more.

△Potting material should comply with UL 3730 requirements for materials contact live parts and material water exposure and immersion(f2 or f1 in accordance with UL 746C), the thickness of potting material which cover conductive part should not less than 3mm.

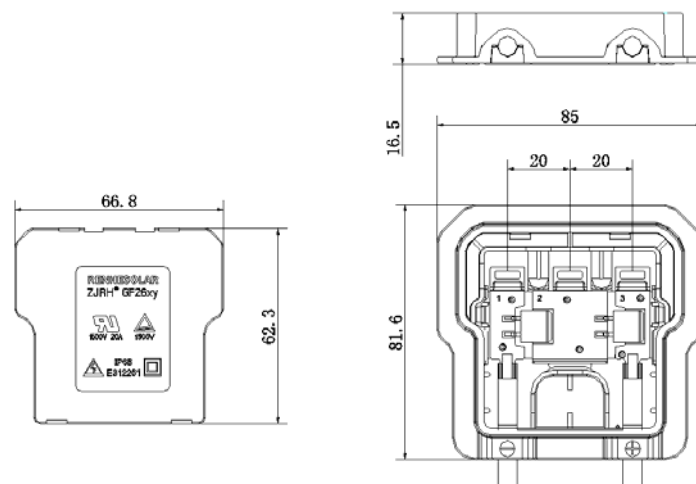
△During the assembly process, keep the connectors away from any corrosive materials.

△For field use, if connector can't be mated immediately, please use dustproof cap to protect connector.

△Technological improvements and appearance changes may occur, please see the nameplate on the connectors and the connectors as the standard. The changes will be included in the new edition of instruction without extra notice.

△Without prior written permission by Zhejiang Renhe Photovoltaic Technology co., ltd., any form of copy, transmission, distribution and storage of the contents in this document is forbidden.

成品 Finished Products



主要技术规格 Main Technical Specification:

认证 Certifications	TUV	UL
额定电压 Rated Voltage	1500V for GF26xG 1000V for GF26xQ	1500V for GF26 AGCD 1000V for GF26 AQCD 600V for GF26 AXCD

最大工作电压 Max. Working (module) Voltage	100V	
额定电流 Rated Current	13A for PST4520 15A for PST4530/T and PST6020 20A for PST5040D and SBT4050DY	20A
应用电缆线 Connecting Capacity	IEC:4mm ² ϕ5.3~7.2mm OD IEC:2.5mm ² ϕ4.8~5.0mm OD	PV WIERE 12AWG ϕ5.5~7.2mm OD
相对温度指数 RTI Of Insulating Materials	110°C	
安全等级 Safety Class	Class II	
污染等级 Pollution Degree	1 (after potting, inside of box)	
防护等级 Protection Degree	IP65/IP67/IP68(1m,1h)	
反向电流 Reverse Current	45A	
最大环境温度 Maximum Ambient Temperature	-40 ~+85°C	
应用连接器 Connector	TUV1000V: RHC2xyzu,EVO2,EVO2A,MC4 TUV1500V: RHC2xyzu,EVO2,EVO2A,	UL1000V: RHC2xyzB,MC4,EVO2,EVO2A UL1500V: RHC2xyzC,MC4,EVO2,EVO2A
连接方式 Type Of Connection	线 缆: 压接 / Cable: Crimped-type 二极管: 锡焊 / Diode: Soldered-type 焊 带: 锡焊 / PV Ribbon: Soldered-type	

产品命名 Product's name

1、TUV 命名 (TUV name):

产品完整名称为 GF26xy, xy 为变量, 其中 x 代表电流; y 代表电压。

Product's full name is GF26xy, xy is variable, x is rated current information; y is System voltage

x	1	Rated current 13A, diode, type PST4520, by Renhe Photovoltaic Technology Co., Ltd. Peak reverse voltage 45 V, average rectifier current
	2	Rated current 15A Diode, type PST6020, by Renhe Photovoltaic Technology Co., Ltd. Peak reverse voltage 60V, average rectifier current 20A
	3	Rated current 20A diode, type PST5040D, by Renhe Photovoltaic Technology Co., Ltd. Peak reverse voltage 50V, average rectifier current 40A. Diode type SBT4050DY, by Yangzhou Yangjie Electronic Technology Co., Ltd. Peak reverse voltage 50V, average rectifier current 40A Diode type SBT4050DY, by ChangZhou Star Sea Electronics Co.,Ltd. Peak reverse voltage 50V, average rectifier current 40A
y	Q	1000V system voltage
	G	1500V system voltage

2、UL 命名 (UL name):

产品完整名称为 GF26xy ABCD, 其中 ABCD 为变量,表示的信息如下:

Product's full name is GF26xy ABCD. And the suffix ABCD is variable, and the information they stand for is as follows.

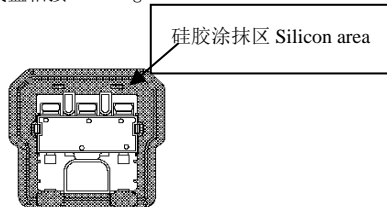
A,额定电流信息/rated current information; B,额定电压信息/System voltage; C,连接器信息/Connector information; D,线缆信息/Cable information.

A	1	Rated current 20A. Diode, type PST4520, by Renhe Photovoltaic Technology Co., Ltd. Peak reverse voltage 45V, average rectifier current 20A.
	2	Rated current 20A. Diode, type PST6020, by Renhe Photovoltaic Technology Co., Ltd. Peak reverse voltage 60V, average rectifier current 20A.
	3	Rated current 20A. Diode, type PST4530/T, by Renhe Photovoltaic Technology Co., Ltd. Peak reverse voltage 45V, average rectifier current 30A
	4	Rated current 20A. Diode, type PST5040D, by Renhe Photovoltaic Technology Co., Ltd. Peak reverse voltage 50V, average rectifier current 40A
B	G	1500V system voltage
	Q	1000V system voltage
	X	600V system voltage
C	m	Connector, type PV-KST4(female),PV-KBT4(male) ,followed by/6,followed by "I" or "II", followed by - UR, by STAUBLI ELECTRICAL CONNECTORS AG (E343181), rated 1500V dc, 30A max with 12AWG cable.
	e	Connector, is type PV-KST4-EVO2(female), PV-KBT4-EVO2(male), followed by/6, followed by "I" or "II", followed by - UR, by STAUBLI ELECTRICAL CONNECTORS AG (E343181), rated 1000V/1500V dc, 35 A max with 12AWG cable.
	q	Connector, Type PV-KST4-EVO 2A/6II (female) and PV-KBT4-EVO 2A/6II (male), STAUBLI ELECTRICAL CONNECTORS AG (E343181), rated 1500V dc,39A max with 12AWG cable.
	t	Connector, type RHC2xMzA,male and female, by Zhejiang RENHE PHOTOVOLTAIC TECHNOLOGY CO LTD (E344325),rated 600V dc,35A max with 12AWG cable.
	r	Connector, type RHC2xMzB,male and female, by Zhejiang RENHE PHOTOVOLTAIC TECHNOLOGY CO LTD (E344325),rated 1000V dc,35A max with 12AWG cable.

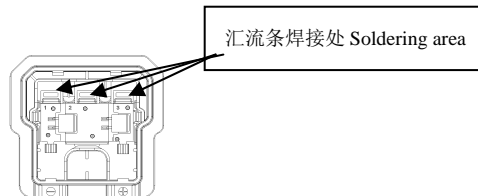
C	s	Connector, type RHC2xMzC, male and female, by Zhejiang RENHE PHOTOVOLTAIC TECHNOLOGY CO LTD (E344325), rated 1500V dc, 35A max with 12AWG cable.
D	d	PV wire, 12AWG, by ZHEJIANG RENHE PHOTOVOLTAIC TECHNOLOGY CO LTD (E332136), sunlight resistant, 90°C wet or dry. Rated 600V, 48 strands, 5.7&6.42mm OD
	g	PV wire, 12AWG, by ZHEJIANG RENHE PHOTOVOLTAIC TECHNOLOGY CO LTD (E332136), sunlight resistant, 90°C wet or dry. Rated 2000V, 48 strands, 6.42&7.0mm OD

安装过程 Installation

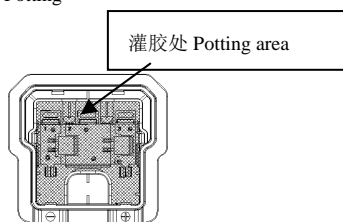
1. 接线盒粘接 Pasting



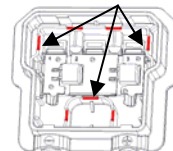
2. 汇流条安装 Ribbon Installation



3. 灌封 Potting



最低灌胶面 lowest potting level,
灌胶量 Volume of silicon: 21ml



4. 盒盖的安装和打开/Installation and opening of cover

盒盖安装/Installation of cover: 1、插入1号和2号卡扣/ Insert the No.1 and the No.2 buckle

2、按入 3 号和 4 号卡扣/ Press the No. 3 and the No. 4 buckle

盒盖打开/Opening of cover: 用螺丝刀插入5号或6号的卡槽中向外撬即可打开盖板/

Insert a screwdriver into the slot No. 5 or the slot No.6 and pry it outward to open the cover

